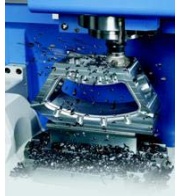


TOOLING MACHINES & WORKING SYSTEMS

NOTA BENE :
AIR-CONDITIONED AREA FOR PRODUCTION DEPARTMENT (FIXED TEMPERATURE)

milling

Type	X axis	Y axis	Z axis	A axis	C axis	Tool System
Vertical Machining Center CNC – MAZAK Mod. VTC800/30SR – 5 AXIS with automatic A axis by head rotation with automatic C axis by rotatable table	3000	800	720	± 110°	± 360°	ISO40
Vertical Machining Center CNC – SIGMA Mod. MISSION 5M	1600	600	685	/	/	ISO40
Vertical Machining Center CNC – MAZAK Mod. FJV250	1020	510	460	/	/	ISO40
Vertical Machining Center CNC – SIGMA Mod. FLEXI 7P-5AX – 5 AXIS with aut. double pallets changer + tandem worktables system	1500 2100	700	950	±110°	± 360°	ISO40
Vertical Machining Center CNC – C.B. FERRARI Mod. A17 – with rotating table	800	400	500	+ 30° - 90°	± 360°	ISO40
Vertical Machining Center CNC – MAZAK Mod. VARIAXIS 630 – 5 AXIS with automatic double pallets changer	630	765	510	+ 30° - 120°	± 360°	ISO40



boring

Type	X axis	Y axis	Z axis	A axis	W axis	Tool System
Horizontal boring machine CNC – ALESAMONTI Mod. MCS100 – 5 AXIS	1500	1000	1200	± 360°	canotto	ISO50



turning



Type	Machining Diameter	Machining Length
Lathe CNC – DAEWOO Mod. PUMA 400 (2 AXIS + C-AXIS AND MOTORIZED TOOLS)	560	978
Lathe CNC – MAZAK Mod. NEXUS 250-II-M (2 AXIS + C-AXIS AND MOTORIZED TOOLS)	350	504
Lathe CNC – MCM Mod. ATL465x2000 (2 AXIS + C-AXIS AND MOTORIZED TOOLS)	940	1500
Lathe TEACH-IN CNC – CMT – Mod. SUPER URSUS 340	580	1500
Conventional Lathe – CMT – Mod. URSUS 300	550	1500
Conventional Lathe – SCHAUBLIN	/	/

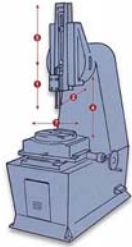
grinding

Type	Working size
Horizontal-spindle grinding machine for plane surfaces – ROSA Mod. IRON 12.6	1250 x 610 x 480
Machine for internal/external cylindrical grinding – RIBON Mod. UTC1500 with MARPOSS system measurement	Ø 350 x 1500



Laser cutting

Type	Working size - Power
Laser cutting system - BYSTRONIC Mod. BYSTAR 3015 with aut. double pallets changer and rotary axis for profiles and tubes	3000 x 1500 – 3000 W (tubes Ø15-315)



Complementary machining processes

Type	Working size
Slotting machine / Broach machine CAM – Mod. SAC200	
Bandsaw CNC machine BIANCO – Mod. 350 A	max Ø 350
Bandsaw machine FMB – Mod. PRIMA 250 D	max Ø 250
Circular-saw machine PEDRAZZOLI – Mod. SUPER BROWN SPECIAL	max Ø 150
Chamfer machine OMCA	
Twist drill machine EMA	
Sensitive drilling machine SERRMAC	
Tapping machine SARA	
Hydraulic press 40 Ton ORLANDINI	
Spot Welding machine CEA – NKLP 2.0	
Welding machine PACAR	
TIG Welding machine MIGATRONIC – Mod. PILOT 2400	



Surface finishing machines

Type	Technical Features :
Vibrator NICEM – Mod. VIB.180.SM	Working size 280 mm x 450 mm
Sandblasting machine NORBLAST – Mod. FN31	Working size dim. 1000 x 600 mm
Orbital sanders RUPES – Mod. SS70	
Belt grinding & polishing machine ACETI – Mod. 05	



Marking solutions



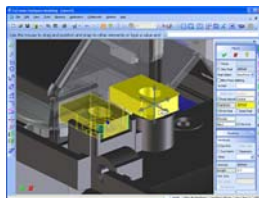
Type	Technical Features :
CNC Dot Matrix marking machine TECHNOMARK – Mod. MULTI 4	Working size : 110 x 50 mm
Mechanical Impact marking machine BERMA – Mod. MC60M	
Vibrating Pen BRENNENSTUHL – SIGNOGRAPH 25	
Electrical Pen LTF – Mod. 298	

Vertical storage systems



Type	Technical Features :
Aut. vertical storage machine SYSTEM LOGISTICS – Mod. MODULA F500	Nr. 82 drawers dim. 2580 x 680 mm Load capacity : 500 kg/drawer
Aut. vertical storage machine KARDEX – Mod. SHUTTLE	Nr. 70 drawers dim. 3000 x 700 mm Load capacity: 250 kg/drawer
Softwares WINPICK – WINMA - SYSTORE	

Computers : Hardware e Software



Type	Technical Features :
Network Server with no. 12 clients	Small Business Server / Windows XP
Software Antivirus	McAfee TOPS Advanced
Business Software Solution	Prodware (ELABORA)
Software CAD 3D	SOLIDWORKS MODELLING (CoCreate)
Software CAD 2D	SOLIDWORKS DRAFTING ME10 (CoCreate)
Software CAM 3D with option to work blades and impellers	HYPERMILL / HYPERTURN (Open Mind)
Software CAM 2½D	PACW (S.A. Informatica)